

Ruawai Adaptive Pathways – Decision on Recommended Community Values and Pathway Objective

Meeting: Kaipara District Council
Date of meeting: 26 July 2023
Reporting officer: Katy Simon, Climate Change Advisor

Purpose | Ngā whāinga

To seek approval on the Ruawai Community Panel's recommended community values and pathway objectives.

Executive summary | Whakarāpopototanga

The Ruawai Adaptive Pathways, Ruawai Community Panel (the Panel) seek a decision on the recommended community values and pathway objectives. The community values and pathway objectives establish what matters most to the Ruawai community in the context of the adaptive pathways work. This decision is a fundamental step towards selecting adaptation options and designing adaptive pathways.

Recommendation | Ngā tūtohunga

That the Kaipara District Council

- a) Approves the following community values and pathway objectives, as recommended by the Ruawai Community Panel:
 - Community values
 - Flood safety and protection
 - A strong, well-rounded local economy
 - A sense of belonging to community and community connection
 - Healthy land and waters for the next generation
 - Connection to the land and places of cultural importance
 - Farming services and food production
 - Pathway objectives, in order by priority
 1. Protect life, lifeline assets (access) and services by enhancing, and maintaining local management of, the existing stop banks and drainage networks.
 2. Maintain a rural village centre and protect and improve community spaces, amenities, and services.
 3. Enhance the health of the coastal environment and our waterways through nature-based solutions where appropriate.
 4. Enhance the resilience of farming and agriculture to support a strong, balanced local economy.
 5. Protect heritage and cultural values and sites of significance.

Context | Horopaki

Ruawai Adaptive Pathways is the community adaptation planning pilot project for Council and for Te Tai Tokerau Northland. Through community adaptation planning, Council will support residents to plan/prepare for the potential effects of increased flooding and coastal hazards. Ruawai Adaptive Pathways started in 2022. The aim is to deliver the Ruawai adaptation plan by mid-2024.

The [Ruawai Community Panel](#) is at the centre of this process, The Panel leads the conversation on coastal hazards and flooding and follows the Ministry for the Environment planning cycle (Figure 1 below).

The Panel is supported by the project team and by technical advisors and assessment to develop adaptive pathways for the project area (Figure 2 below). The result will be a flexible, long-term adaptation plan.

Following the endorsement of an adaptation plan, Council will be responsible for monitoring environmental indicators and delivering actions when specific trigger points are reached, such as changing land-use zoning or delivering new infrastructure. As such, Council is the lead decision-making authority for the Ruawai Adaptive Pathways adaptation plan.

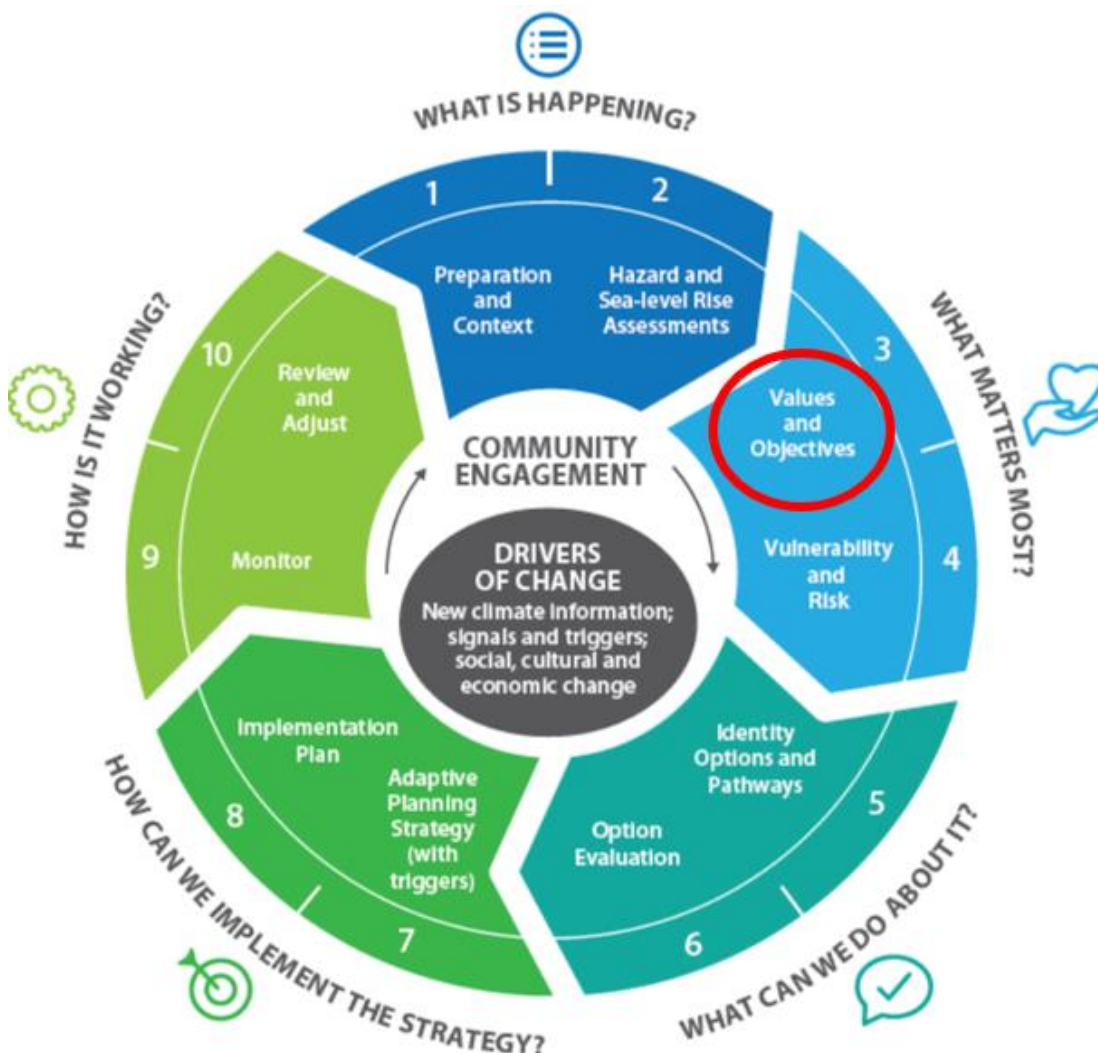


Figure 1 Ministry for the Environment Adaptation Planning Cycle, Adapted



Figure 2 Ruawai Adaptive Pathways Physical Project Boundary

The community values and pathway objectives are step three on the planning cycle, and forms part of the answer to the, ‘What matters most?’ question (Figure 1).

Initial community values and pathway objectives came from:

- community interviews, input at last year’s Ruawai: *Our Stories, Our Futures* event, community surveys and drop-in days
- Te Uri o Hau values and objectives
- Northland Regional Policy Statement and Proposed Regional Plan
- Council Operative District Plan and Spatial Plan
- Kaipara Moana Remediation
- Regional Transportation Plan and Council Infrastructure Strategy.

On 2 May 2023, the Panel provided feedback on the initial values and objectives. This feedback informed the development of the final proposed values and objectives, including the creation of partnership principles between Te Uri o Hau and Ruawai Adaptive Pathways.

On 20 June 2023, the Ruawai Community Panel (Panel) approved the community values and pathway objectives for recommendation to Kaipara District Council (Council).

Panel meeting notes are available on the [Ruawai Adaptive Pathways website](#).

The *Ruawai Adaptive Pathways - Community Values and Pathway Objectives Final Report* (**Attachment A**) explains the drafting process and shows the results of the wider community engagement. The report provides an initial assessment of the pathway objectives alignment with existing policy and planning objectives. It also establishes the project’s guiding values and partnership principles.

Discussion | Ngā kōrerorero

The community values and pathway objectives are the touchstones for the development of adaptation response options and pathway development, steps five to seven in Figure 1 above.

The community values will help determine the suitability of options across five kinds of adaptation approaches: maintain, accommodate, protect, retreat, and avoid.

The pathway objectives are in order by priority. They will inform technical assessments to evaluate and prioritise response options and develop adaptive pathways. The Panel will refer to the pathway objectives as they advise on adaptation approaches, options evaluation and pathway development.

Options

Option 1: Approve the community values and pathway objectives, as recommended by the Ruawai Community Panel.

This is the recommended option.

Option 2: Identify specific changes to the recommended community values and pathway objectives and request that the Panel further consider Council's changes. This is not the recommended option as it would show that Council is not supportive of the process the Panel is following.

Significance and engagement | Hirahira me ngā whakapāpā

The decisions or matters of this report are considered to have a low degree of significance in accordance with Council's Significance and Engagement Policy. No feedback is required, and the public will be informed of Council's decision via the agenda and minutes publication of this meeting, on the website and through other channels if appropriate.

The Ruawai community will be further engaged as a part of steps 5-7 of the adaptation planning cycle (Figure 1).

Next steps | E whaiake nei

The Ruawai Community Panel will meet again on 12 September 2023. At this meeting the Panel will confirm risk thresholds, confirm final risk assessment results and take an initial, high-level look at adaptation options and adaptive pathways.

Staff will present a report at the October 2023 Council Briefing on step five, 'identify options and pathways'. This report will introduce the framework for adaptation approaches and response options. This report will also present key results from the risk assessment.

Attachments | Ngā tapiritanga

	Title
A	Ruawai Adaptive Pathways - Community Values and Pathway Objectives Report